

Range of flame proof roof mounted fans, classified **Ex II2G Exd IIB(H2)** and specially designed for the ventilation / extraction of potentially hazardous and explosive gases.

Working temperature up to +40°C.
Direct drive backward curved centrifugal impeller, manufactured from galvanised sheet steel and aluminium hub.
Base manufactured from galvanised sheet steel and brass inlet ring.
Cowl manufactured in galvanised sheet steel.
Bird proof guard in accordance with EN ISO 13857 Standard.

Motors

Fans designed in accordance with ATEX directive, three phase motor, IP55, Class F and classification:
- ATEX flame proof motor - Gas: **Ex II 2G Ex d IIB+H2 T4** (with motor Ex d IIC T4)

Available in 4, 6 or 8 poles, depending on versions.

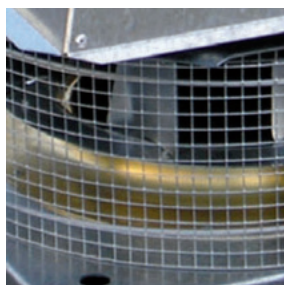
Three phase motor 230/400V-50Hz, IP55, class F.

Motor fitted with PTC thermal protection to connect to a frequency inverter.

Specific applications



Easy to install
Supports easing the installation on the roof.



Bird-proof guard.



Backward curved centrifugal impellers
To prevent accumulation of dirt.

TECHNICAL CHARACTERISTICS

Before installation check that the product electrical characteristics listed on the data plate label (voltage, power, frequency, etc.) match those of the intended electrical supply.

Model	Speed (rpm)	Motor power (kW)	Nominal current at 400 V [A]	Maximum airflow (m ³ /h)	Sound pressure level at 1,5 m (dB(A))		Weight (kg)
					Inlet	Outlet	

4-Pole MOTOR

TCDH Exd 010-4	1500	0,25	1,2	1.120	58	62	22
TCDH Exd 020-4	1500	0,25	1,2	2.450	62	66	25
TCDH Exd 030-4	1500	0,37	1,5	3.300	67	71	32
TCDH Exd 040-4	1500	0,55	1,7	5.500	71	75	35
TCDH Exd 060-4	1500	0,75	2,2	7.000	74	78	57
TCDH Exd 080-4	1500	1,50	4	9.600	76	81	68
TCDH Exd 105-4	1500	2,20	5,2	12.800	79	84	90

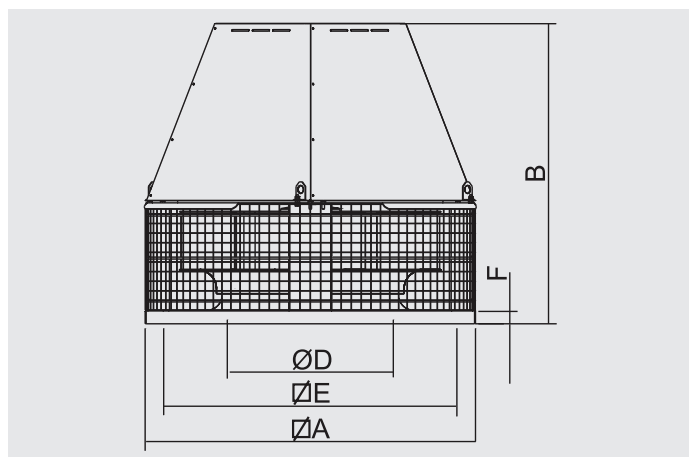
6-Pole MOTOR

TCDH Exd 020-6	1000	0,18	1	1.650	52	56	25
TCDH Exd 030-6	1000	0,18	1	2.200	57	61	32
TCDH Exd 040-6	1000	0,25	1,4	3.700	61	65	35
TCDH Exd 060-6	1000	0,25	1,4	4.700	64	68	57
TCDH Exd 080-6	1000	0,37	1,6	6.500	66	71	68
TCDH Exd 105-6	1000	0,75	2,4	8.700	68	73	90
TCDH Exd 110-6	1000	1,10	3,4	11.000	72	77	96
TCDH Exd 140-6	1000	2,20	5,4	16.000	75	81	110
TCDH Exd 195-6	1000	3,00	8,5	22.500	78	83	126
TCDH Exd 250-6	1000	5,50	14	25.500	81	86	150

8-Pole MOTOR

TCDH Exd 060-8	750	0,12	0,85	3.400	55	60	57
TCDH Exd 080-8	750	0,18	1,15	4.800	59	63	68
TCDH Exd 105-8	750	0,37	1,5	6.400	61	66	90
TCDH Exd 110-8	750	0,55	2,1	8.200	64	69	96
TCDH Exd 140-8	750	1,10	4,1	12.100	68	73	110
TCDH Exd 195-8	750	1,50	4,8	17.000	71	76	126
TCDH Exd 250-8	750	3,00	8,7	19.200	74	79	150

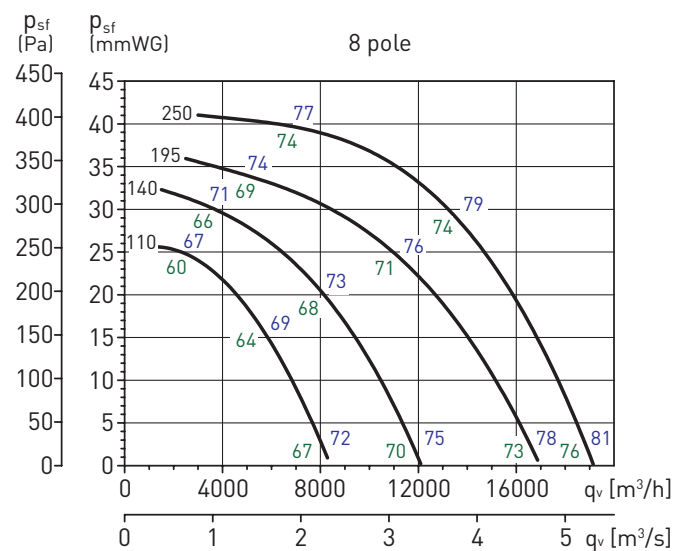
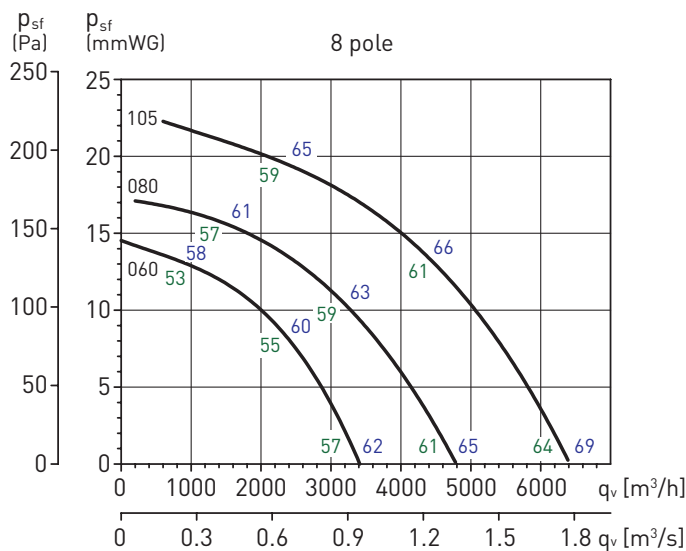
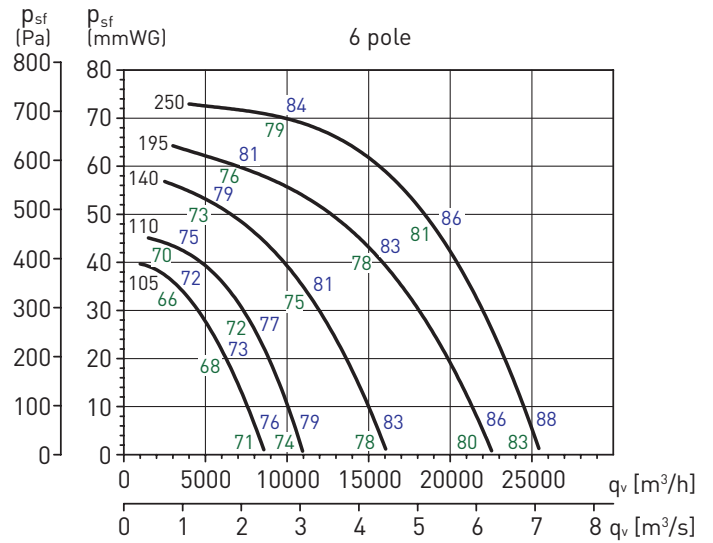
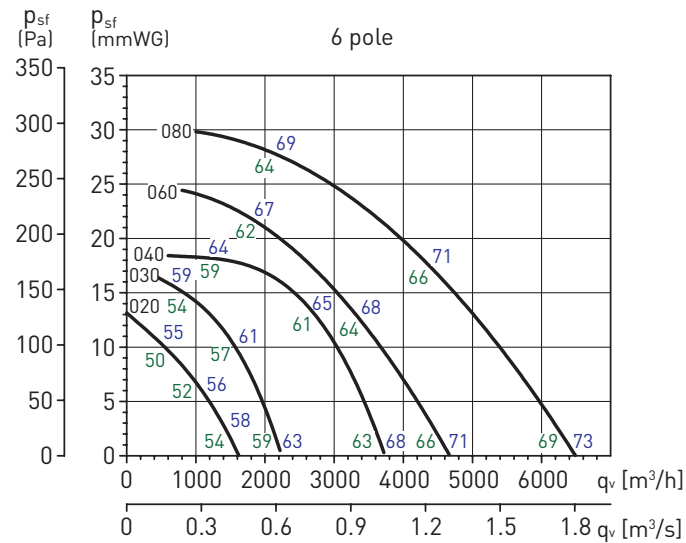
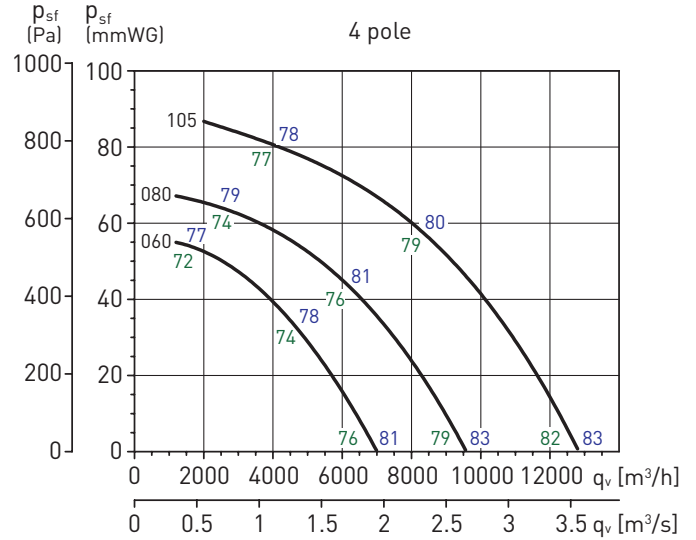
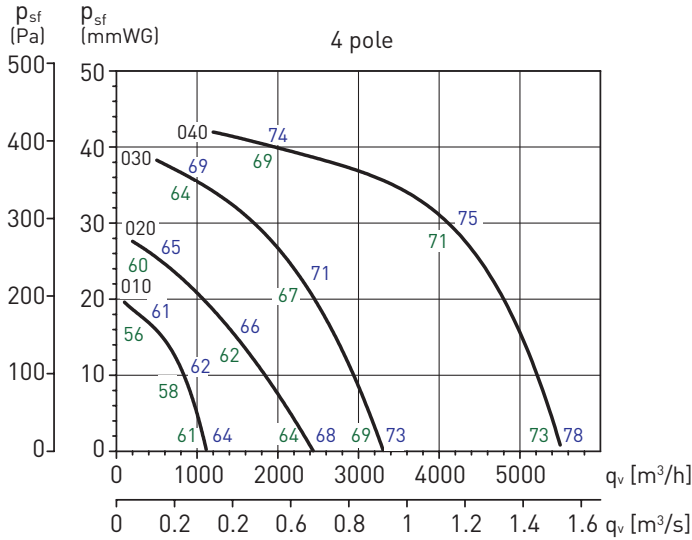
DIMENSIONS (mm)



Model	A	B	D	E	F
TCDH Exd 010	430	405	181	344	30
TCDH Exd 020	430	430	217	344	30
TCDH Exd 030	540	539	256	450	30
TCDH Exd 040	540	562	294	450	30
TCDH Exd 060	660	650	326	570	30
TCDH Exd 080	660	662	362	570	30
TCDH Exd 105	800	726	399	668	30
TCDH Exd 110	800	759	444	668	30
TCDH Exd 140	946	876	490	830	30
TCDH Exd 195	946	900	537	830	30
TCDH Exd 250	1030	940	581	830	40

PERFORMANCE CURVES

- q_v : Airflow in m^3/h and m^3/s .
- p_{sf} : Static pressure in mmWG and Pa.
- Dry air at 20°C and 760 mmHg.
- Performance data in accordance with ISO 5801 and AMCA 210-99 Standards.
- Sound pressure level in dB(A) at 1.5m hemispherical, in free field conditions, at the inlet (green values) and the outlet (blue values).



FLAME PROOF ROOF MOUNTED FANS TCDH EXD Series



ACOUSTIC CHARACTERISTICS

Sound power spectrums in dB(A)

Model TCDH Exd 010-4		63	125	250	500	1000	2000	4000	8000
1000 m³/h	Inlet	38	51	65	68	65	62	60	57
	Outlet	42	55	67	71	70	69	67	64
600 m³/h	Inlet	36	49	61	66	63	61	58	54
	Outlet	39	53	65	68	68	67	64	60
400 m³/h	Inlet	35	48	61	63	62	58	55	49
	Outlet	40	53	65	68	67	66	64	59

Model TCDH Exd 030-4		63	125	250	500	1000	2000	4000	8000
3400 m³/h	Inlet	53	68	75	74	73	71	70	67
	Outlet	56	71	76	79	79	78	76	73
2000 m³/h	Inlet	51	65	73	71	71	70	67	63
	Outlet	54	69	74	78	77	75	72	68
1000 m³/h	Inlet	50	65	70	70	69	66	63	58
	Outlet	54	69	73	76	75	74	70	65

Model TCDH Exd 060-4		63	125	250	500	1000	2000	4000	8000
6500 m³/h	Inlet	60	75	82	81	80	78	77	74
	Outlet	63	79	83	87	86	85	83	80
4000 m³/h	Inlet	58	72	80	78	78	77	74	70
	Outlet	61	76	81	85	84	82	79	75
2000 m³/h	Inlet	57	72	78	78	76	74	70	65
	Outlet	62	76	80	83	83	82	78	73

Model TCDH Exd 105-4		63	125	250	500	1000	2000	4000	8000
12500 m³/h	Inlet	65	81	88	86	85	84	83	80
	Outlet	69	85	89	93	92	91	89	86
9000 m³/h	Inlet	63	77	85	84	84	82	80	75
	Outlet	67	82	87	91	90	88	85	81
4000 m³/h	Inlet	63	78	83	83	82	79	76	71
	Outlet	67	82	86	89	88	87	83	78

Model TCDH Exd 020-6		63	125	250	500	1000	2000	4000	8000
1500 m³/h	Inlet	43	53	61	58	57	57	56	53
	Outlet	45	56	61	64	64	63	61	58
1000 m³/h	Inlet	41	48	57	57	57	56	53	49
	Outlet	44	54	60	63	62	60	57	53
600 m³/h	Inlet	40	47	56	55	55	52	49	43
	Outlet	44	54	58	61	61	59	55	50

Model TCDH Exd 040-6		63	125	250	500	1000	2000	4000	8000
3500 m³/h	Inlet	47	62	69	68	67	65	64	61
	Outlet	50	66	70	74	73	72	70	67
2500 m³/h	Inlet	45	59	67	66	65	64	62	57
	Outlet	48	63	68	72	71	69	66	62
1400 m³/h	Inlet	45	59	65	65	63	61	58	52
	Outlet	49	63	67	70	70	69	65	60

Model TCDH Exd 080-6		63	125	250	500	1000	2000	4000	8000
6100 m³/h	Inlet	52	68	75	73	72	71	70	67
	Outlet	56	71	76	79	79	78	76	73
4100 m³/h	Inlet	50	64	73	71	71	69	67	62
	Outlet	54	69	74	78	77	75	72	68
2000 m³/h	Inlet	50	65	70	70	69	66	63	57
	Outlet	54	68	73	75	75	74	70	65

Model TCDH Exd 110-6		63	125	250	500	1000	2000	4000	8000
1050 m³/h	Inlet	64	73	80	78	77	77	76	73
	Outlet	67	77	82	85	85	84	82	79
7500 m³/h	Inlet	61	69	77	76	77	75	73	68
	Outlet	65	75	80	84	83	81	78	74
4000 m³/h	Inlet	61	67	76	76	75	72	69	63
	Outlet	65	74	78	81	81	79	75	70

Model TCDH Exd 195-6		63	125	250	500	1000	2000	4000	8000
20000 m³/h	Inlet	70	79	86	84	83	83	82	79
	Outlet	73	84	88	92	92	91	89	86
15000 m³/h	Inlet	68	75	83	83	83	82	79	75
	Outlet	71	82	87	90	89	87	84	80
7500 m³/h	Inlet	67	74	82	82	81	79	75	70
	Outlet	71	80	84	88	88	85	81	76

Model TCDH Exd 020-4		63	125	250	500	1000	2000	4000	8000
2400 m³/h	Inlet	48	64	70	69	68	67	66	63
	Outlet	51	66	71	74	74	73	71	68
1500 m³/h	Inlet	46	61	68	67	67	65	63	58
	Outlet	49	64	69	73	72	70	67	63
800 m³/h	Inlet	46	60	66	66	64	62	59	53
	Outlet	50	64	68	71	71	70	66	61

Model TCDH Exd 040-4		63	125	250	500	1000	2000	4000	8000
5400 m³/h	Inlet	57	72	79	78	77	75	74	71
	Outlet	60	76	80	84	83	82	80	77
4000 m³/h	Inlet	55	69	77	76	75	74	72	67
	Outlet	58	73	78	82	81	79	76	72
2000 m³/h	Inlet	55	69	75	75	73	71	68	62
	Outlet	59	73	77	80	80	79	75	70

Model TCDH Exd 080-4		63	125	250	500	1000	2000	4000	8000
9100 m³/h	Inlet	62	78	85	83	82	81	80	77
	Outlet	66	81	86	89	89	88	86	83
6000 m³/h	Inlet	60	74	83	81	81	79	77	72
	Outlet	64	79	84	88	87	85	82	78
2500 m³/h	Inlet	60	75	80	80	79	76	73	67
	Outlet	64	78	83	85	85	84	80	75

Model TCDH Exd 030-6		63	125	250	500	1000	2000	4000	8000
2000 m³/h	Inlet	48	57	65	63	62	62	61	58
	Outlet	50	61	65	69	69	68	66	63
1500 m³/h	Inlet	46	53	62	61	62	60	58	53
	Outlet	49	59	64	68	67	65	62	58
600 m³/h	Inlet	45	51	60	60	59	57	53	48
	Outlet	49	58	63	66	66	63	59	55

Model TCDH Exd 060-6		63	125	250	500	1000	2000	4000	8000
4200 m³/h	Inlet	50	65	72	71	70	68	67	64
	Outlet	53	69	73	77	76	75	73	70
3000 m³/h	Inlet	48	62	70	68	68	67	64	60
	Outlet	51	66	71	75	74	72	69	65
1500 m³/h	Inlet	47	62	68	68	66	64	60	55
	Outlet	52	66	70	73	73	72	68	63

Model TCDH Exd 105-6		63	125	250	500	1000	2000	4000	8000
8000 m³/h	Inlet	60	69	76	75	74	74	73	70
	Outlet	63	73	78	82	81	80	78	75
5500 m³/h	Inlet	58	65	73	73	73	72	70	65
	Outlet	61	72	77	80	79	77	74	70
3000 m³/h	Inlet	57	64	72	72	71	69	65	60
	Outlet	61	71	75	78	78	75	72	67

Model TCDH Exd 140-6		63	125	250	500	1000	2000	4000	8000
15500 m³/h	Inlet	67	76	84	82	81	81	80	77
	Outlet	70	81	86	89	89	88	86	83
10000 m³/h	Inlet	65	72	80	80	81	79	77	72
	Outlet	68	79	84	88	86	84	81	77
5500 m³/h	Inlet	64	71	79	79	78	76	73	67
	Outlet	68	78	82	85	85	83	79	74

Model TCDH Exd 250-6		63	125	250	500	1000	2000	4000	8000
25000 m³/h	Inlet	72	81	89	87	86	86	85	82
	Outlet	76	86	91	94	94	93	91	88
19000 m³/h	Inlet	70	77	86	85	86	84	82	77
	Outlet	74	84	89	93	92	90	87	83
10000 m³/h	Inlet	69	76	85	85	84	81	78	72
	Outlet	73	83	87	90	90	88	84	79

ACOUSTIC CHARACTERISTICS

Sound power spectrums in dB(A)

Model TCDH Exd 060-8		63	125	250	500	1000	2000	4000	8000
3000 m ³ /h	Inlet	49	59	60	61	61	61	60	57
	Outlet	52	60	64	68	67	67	65	62
2000 m ³ /h	Inlet	46	57	58	60	60	59	56	52
	Outlet	50	59	64	67	65	63	60	56
1000 m ³ /h	Inlet	47	55	58	58	58	55	52	46
	Outlet	50	57	61	65	64	62	58	53

Model TCDH Exd 080-8		63	125	250	500	1000	2000	4000	8000
4000 m ³ /h	Inlet	53	62	64	65	65	65	64	61
	Outlet	56	63	68	71	71	70	68	65
3000 m ³ /h	Inlet	50	60	62	63	64	62	60	55
	Outlet	54	62	67	70	69	67	64	60
1800 m ³ /h	Inlet	51	58	62	62	61	59	55	50
	Outlet	53	61	65	68	68	65	61	56

Model TCDH Exd 105-8		63	125	250	500	1000	2000	4000	8000
55000 m ³ /h	Inlet	53	62	69	68	67	67	66	63
	Outlet	56	66	71	75	74	73	71	68
4000 m ³ /h	Inlet	51	58	66	66	66	65	63	58
	Outlet	54	65	70	73	72	70	67	63
2000 m ³ /h	Inlet	50	57	65	65	64	62	58	53
	Outlet	54	64	68	71	71	68	65	60

Model TCDH Exd 110-8		63	125	250	500	1000	2000	4000	8000
7500 m ³ /h	Inlet	59	68	70	70	71	71	70	66
	Outlet	62	70	74	78	77	76	74	71
5000 m ³ /h	Inlet	55	66	68	69	69	68	66	61
	Outlet	60	68	73	76	75	73	70	66
3000 m ³ /h	Inlet	57	64	68	68	67	65	61	56
	Outlet	59	67	71	74	74	71	67	62

Model TCDH Exd 140-8		63	125	250	500	1000	2000	4000	8000
15000 m ³ /h	Inlet	62	71	73	74	74	74	73	70
	Outlet	65	73	78	81	81	80	78	75
8000 m ³ /h	Inlet	59	69	71	73	73	72	69	65
	Outlet	64	72	77	80	79	77	74	70
4000 m ³ /h	Inlet	60	67	71	71	71	68	65	59
	Outlet	63	70	74	78	78	75	71	66

Model TCDH Exd 195-8		63	125	250	500	1000	2000	4000	8000
15000 m ³ /h	Inlet	65	74	76	76	77	77	76	73
	Outlet	68	76	81	84	84	83	81	78
11000 m ³ /h	Inlet	62	72	74	75	76	74	72	67
	Outlet	66	75	80	83	82	80	77	73
6000 m ³ /h	Inlet	63	70	74	74	73	71	68	62
	Outlet	66	73	77	81	80	77	73	69

Model TCDH Exd 250-8		63	125	250	500	1000	2000	4000	8000
19000 m ³ /h	Inlet	65	74	82	80	79	79	78	75
	Outlet	69	79	84	87	87	86	84	81
14000 m ³ /h	Inlet	63	70	79	78	79	77	75	70
	Outlet	67	77	82	86	85	83	80	76
6000 m ³ /h	Inlet	63	70	79	78	79	77	75	70
	Outlet	66	76	80	83	83	81	77	72

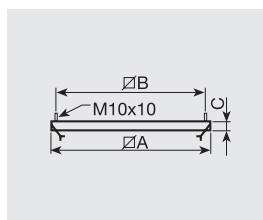
MOUNTING ACCESSORIES



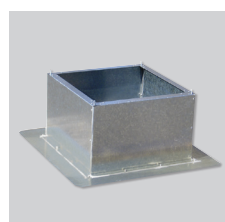
JMS

Sealing frame

For mounting a roof fan on an up stand or base.



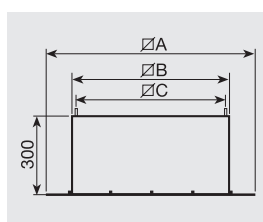
Model	A	B	C
JMS 010/020	368	344	30
JMS 030/040	478	450	30
JMS 060/080	598	570	40
JMS 105/110	698	668	40
JMS 140/195/250	866	830	40



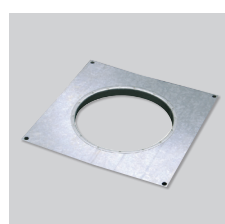
JBS

Flat roof up stand

For mounting a roof fan on a flat roof without up stand.



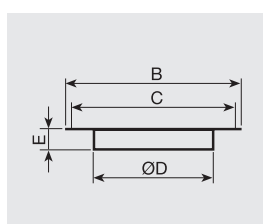
Model	A	B	C
JBS 010/020	428	368	344
JBS 030/040	538	478	450
JBS 060/080	658	598	570
JBS 105/110	758	698	668
JBS 140/195/250	926	866	830



JPA

Accessory adapter plate

To connect the roof fan to circular ducting.



Model	B	C	D	E
JPA 010/020	368	344	250	55
JPA 030/040	478	450	315	55
JPA 060/080	598	570	450	68
JPA 105/110	698	668	560	68
JPA 140/195/250	866	830	710	85